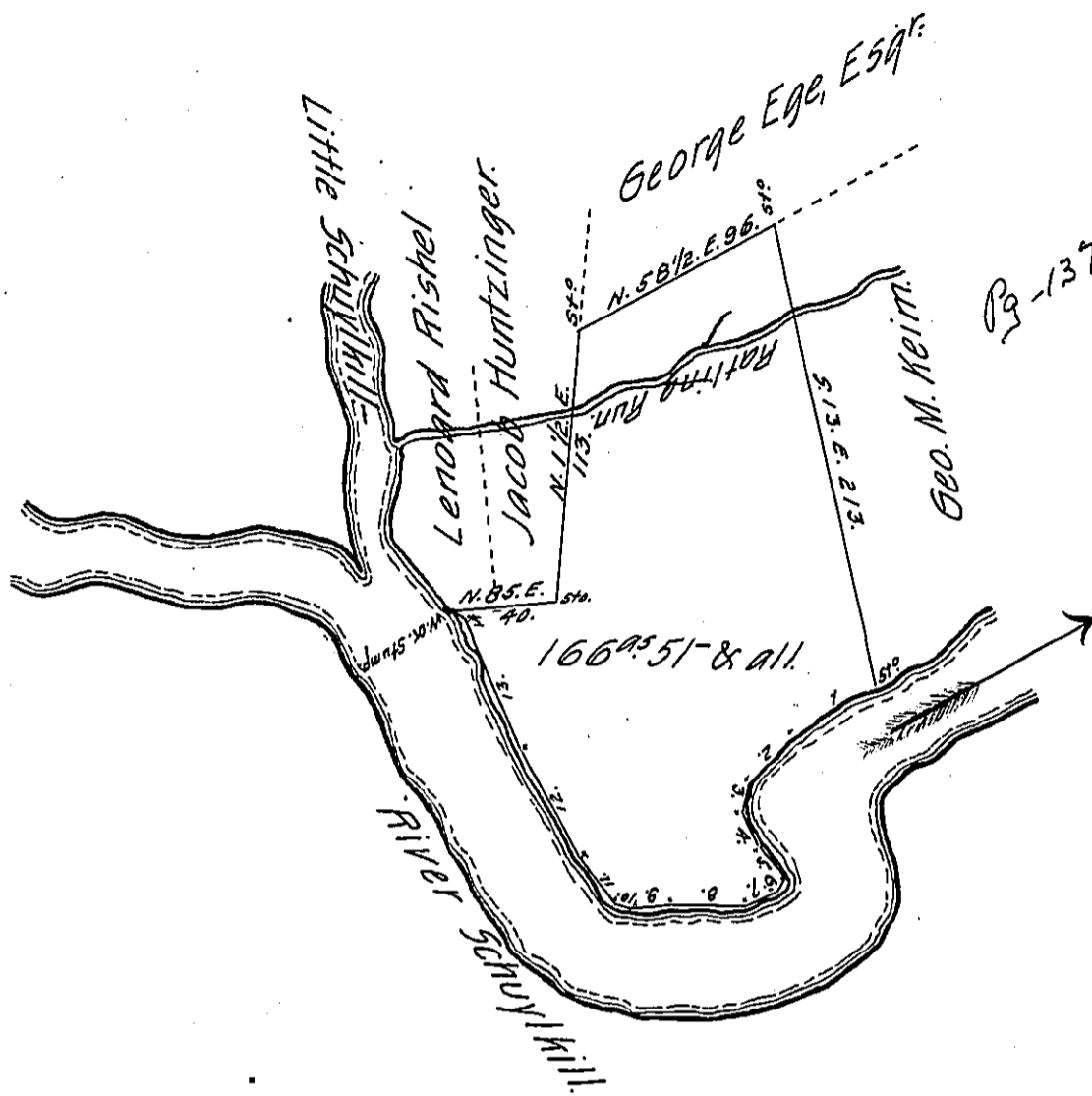


- No 1. 5. 53. W. 33 1/2.
- " 2. 5. 40 1/2. W. 22.
- " 3. 5. 12. W. 8.
- " 4. 5. 21. E. 9.
- " 5. 5. 41 1/4. E. 11.
- " 6. 5. 21. W. 7 1/4.
- " 7. 5. 66. W. 9 1/4.
- " 8. West. 30.
- " 9. 5. 80. W. 20.
- " 10. N. 76 1/2. W. 6 1/2.
- " 11. N. 31. W. 25.
- " 12. N. 31. W. 47.
- " 13. N. 29 1/4. W. 56.
- " 14. N. 35 1/2. W. 8 1/2.



Situate in Brunswick township, Schuylkill county, containing one hundred and sixty six acres and fifty one perches, and the allowance of six per Cent.

Surveyed on the 24<sup>th</sup> day of November 1828, in pursuance of a Warrant dated the 21<sup>st</sup> day of November 1828. granted - Daniel M. Keim.

F. Lauderbrun,

To Gabriel Hiester, Esquire,

Dep. Surveyor of Schuylkill Co.

Surveyor General of Penn<sup>a</sup>

IN TESTIMONY that the above is a copy of the original remaining on file in the Department of Internal Affairs of Pennsylvania, made conformably to an Act of Assembly approved the 16th day of February, 1833, I have hereunto set my Hand and caused the Seal of said Department to be affixed at Harrisburg, this seventh day of July 1905.

*Isaac D. Brown*  
Secretary of Internal Affairs.